



Slowing Progress

New findings reveal the link between extra weight and cancer may be more tangled than once thought.

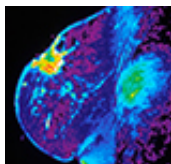
[MORE »](#)



Mother-to-Child Obesity Link

Scientists have discovered the genetic footprints of obesity in newborns' umbilical cords.

[MORE »](#)



Breast Cancer Switchbacks

A new study shows how spontaneous changes in some breast tumors can lead to treatment complications and the need for multiple drugs.

[MORE »](#)

Connect



Featured Events

09.07.16 [Yoga for Every Body.](#)
Countway, Minot Rm., noon.

09.09.16 [Ethical Involvement of Patients in FDA Regulatory Evaluation of New Products.](#)
Gordon Hall, Waterhouse Rm., 12:30 p.m.

Full Calendar

Awards and Recognitions

Dean's Blog

Harvard Medicine magazine

Paper Chase

Harvard Health Publications



Reflected Anew

Not all scars are visible, as patients and physicians sometimes discover after surgery.



Published by Harvard Medical School, Office of Communications and External Relations
[About Us](#) | [Contact Us](#)

Was this email forwarded to you? Subscribe to receive *Harvard Medicine News* [here](#).
To unsubscribe, please click [here](#).