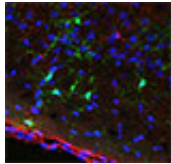


## Bird's Eye Perspective

HMS research has yielded critical new insights into how humans developed sharp daylight vision.

[MORE »](#)



## Lupus Leap

A surprising discovery shows a direct link between inflammation and mental illness, pointing to potential treatments for diseases such as lupus.

[MORE »](#)



## The Hunger Gates

How do external signals trigger cravings and influence behavior? New research may lead to targeted obesity therapies.

[MORE »](#)

### Connect



HMS Facebook iTunes LinkedIn Twitter YouTube Instagram

### Featured Events

**06.29.17** [Yoga for Everybody](#).

HMS Quad (weather permitting) 2 p.m.

**06.30.17** [Food Truck Fridays: Curbside Caps](#). 375 Longwood Ave. 11 a.m. - 2 p.m.

### Full Calendar

### Awards and Recognitions

### Dean's Blog

### Harvard Medicine magazine

### Paper Chase

### Harvard Health Publications



## Stopping Zika

HMS researchers are looking for ways to speed up work to halt the transmission of the disease and prevent its devastating effects.



Published by Harvard Medical School, Office of Communications and External Relations  
[About Us](#) | [Contact Us](#)

Was this email forwarded to you? Subscribe to receive *Harvard Medicine News* [here](#).  
To unsubscribe, please click [here](#).