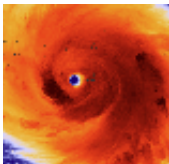


Sight Unseen

Some people with the same form of cancer may respond differently to the same drug. A new study provides insight as to why.

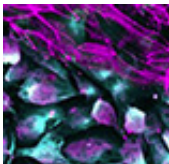
[MORE »](#)



In the Wake of Hurricane Maria

After weeks providing vital health services in Puerto Rico, an HMS professor says 3.4 million Americans on the island are running out of time.

[MORE »](#)



Lung Cancer on a Chip

A new device that mimics a human organ environment reveals the critical role of breathing in non-small cell lung cancer development.

[MORE »](#)

Connect



HMS Facebook iTunes LinkedIn Twitter YouTube Instagram

Featured Events

10.30.17 [5th Annual Harvard Longwood Campus IT Day](#).

Martin Conf. Ctr., 8:30 a.m. - 4:30 p.m.

10.31.17 [Season of Giving: Share the love](#). Armenise

Amph., 2 p.m.

Calendar

Awards and Recognitions

Dean's Blog

Harvard Medicine magazine

Paper Chase

Harvard Health Publishing



The Furry Way to De-Stress

Two new therapy dogs are on campus to offer the kind of unconditional support that only canines can deliver.



Published by Harvard Medical School, Office of Communications and External Relations
[About Us](#) | [Contact Us](#)

Was this email forwarded to you? Subscribe to receive *Harvard Medicine News* [here](#).
To unsubscribe, please click [here](#).