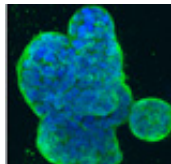




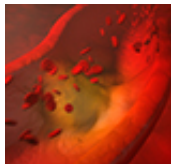
History on Ice

Video: Genome-wide analyses of 51 ice-age humans have revealed several “big shocks” about European prehistory.
[MORE »](#)



Measuring Up

A recent study indicates growth rate may be the missing piece in cancer drug tests.
[MORE »](#)



Night Shift Risks

New research shows women who work more than 10 years of rotating night shifts have an increased risk of developing coronary heart disease.
[MORE »](#)

Connect



Featured Events

05.02.16 [Stories from the Shadows: Reflections of a street doctor](#). Countway, Minot Rm., 5 p.m.

05.05.16 [Imaging Life at High Spatiotemporal Resolution](#). Armenise Amph., 12:30 p.m.

Full Calendar

Awards & Recognitions

Dean's Blog

Harvard Medicine magazine

Paper Chase

Harvard Health Publications



Of Medicine and Ethics

Changes in the business of medicine are creating opportunities to better integrate ethics and social justice concerns into health care decision making.



Published by Harvard Medical School, Office of Communications and External Relations
[About Us](#) | [Contact Us](#)

Was this email forwarded to you? Subscribe to receive *Harvard Medicine News* [here](#).
To unsubscribe, please click [here](#).