



10.13.2015

DISCOVERY AND EDUCATION AT HARVARD MEDICAL SCHOOL

HMS.HARVARD.EDU/NEWS



## Predicting Violent Crime

A new study suggests soldiers at risk for committing violent crimes might be identified through the use of predictive analytics.

[MORE »](#)

### Featured Events

**10.13.15** Launch Event: [Celebration of the Arts and Humanities Initiative at HMS](#). Courtyard Café, 6 p.m.

**10.15.15** Public Forum: [In Search of the Good: A life in bioethics](#). TMEC, Rm. 227, 4:30 p.m.

### Full Calendar

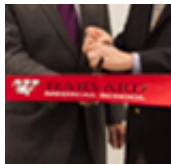
### Awards and Recognitions

### Dean's Blog

### Harvard Medicine Magazine

### Paper Chase

### Harvard Health Publications



### Suite Success

New teaching styles require new learning spaces. HMS celebrated both last week, unveiling the medical education center's new look.

[MORE »](#)



### Advanced Care, Increased Risk

Basic life support ambulance transport may increase your chances of survival in an emergency.

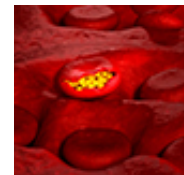
[MORE »](#)



### Medicine Gets Precise

For Boston's HUBweek, HMS experts gathered to discuss the future of medical care, and the power of getting personal.

[MORE »](#)



### Minimizing Malaria

The 2015 Alpert Symposium honored three scientists whose work has meant the difference between life and death for millions of men, women and children.

### Connect



Published by Harvard Medical School, Office of Communications and External Relations  
[About Us](#) | [Contact Us](#)

Was this email forwarded to you? Subscribe to receive *Harvard Medicine News* [here](#).  
To unsubscribe, please click [here](#).