



## Addiction Clue

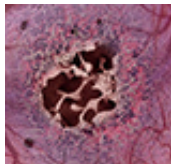
A gene linked to autism spectrum disorders also plays a critical role in addiction-related behaviors. [MORE »](#)



### Changing the Scientific Enterprise

Marc Kirschner's thoughts on how to rescue biomedical research in the U.S.

[MORE »](#)



### To the Bone

A novel device gives scientists a tool to test the effects of new drugs and toxic agents on bone marrow.

[MORE »](#)

#### Connect



HMS Facebook iTunes LinkedIn Twitter YouTube Instagram

#### Featured Events

**05.13.14** Poverty, Disease and Health Care Delivery.  
TMEC 250, 10 a.m.

**05.14.14** Inter-hospital Medical Education Collaborative.  
TMEC 104, 4:15 p.m.

#### Full Calendar

#### Awards and Recognitions

#### Dean's Blog

#### Harvard Medicine Magazine

#### Paper Chase

#### Harvard Health Publications

#### Compass Blog



### Working for Women

The JCSW appreciates its 40-year past as it looks to

the future.



Published by Harvard Medical School, Office of Communications and External Relations  
[About Us](#) | [Contact Us](#)

Was this email forwarded to you? Subscribe to receive *Harvard Medicine News* [here](#).  
To unsubscribe, please click [here](#).