

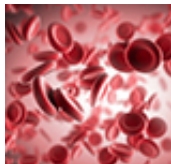
Breast Cancer Clue

Scientists have identified a new cancer mechanism triggered by loss of *BRCA1* and *BRCA2* gene function. [MORE »](#)



Ethics Evolution

A transformative center is helping researchers and caregivers deal with rapidly evolving ethical questions in biomedicine. [MORE »](#)



Blood Relations

Researchers have found a way to reprogram mature blood cells into hematopoietic stem cells in mice. [MORE »](#)

Connect



Published by Harvard Medical School, Office of Communications and External Relations
[About Us](#) | [Contact Us](#)

Was this email forwarded to you? Subscribe to receive *Harvard Medicine News* [here](#).
To unsubscribe, please click [here](#).

Featured Events

05.06.14 Harvard Longwood Bike Fair. HMS Quad, 11:30 a.m.

05.06.14 Curriculum Fellows Lunch Series on Education. TMEC 126, noon.

Full Calendar

Awards and Recognitions

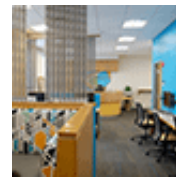
Dean's Blog

Harvard Medicine Magazine

Paper Chase

Harvard Health Publications

Compass Blog



Getting Connected

An innovative IT initiative is providing faculty and students with a smart new place to collaborate.