

Charting Autism's Neural Circuitry

Deleting a single gene in the cerebellum of mice can cause key autistic-like symptoms. [MORE »](#)

Featured Events

07.17.12 Managing Records In All Formats. Countway Library. 12-1 p.m.

07.19.12 Child Care Scholarship Info Session. Countway Library 12-1 p.m.

Full Calendar

Awards & Recognitions

Dean's Corner

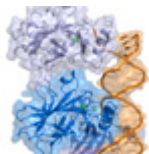
Harvard Medicine Magazine

Idea Lab



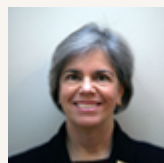
Study Examines U.S. Youth, Anger Attacks

Nearly two-thirds of U.S. adolescents have experienced a severe anger attack at some point in their lives. [MORE »](#)



Damaged Cells Feel the Beat

A damaged cell faces a critical decision: Pause temporarily for DNA repair, or permanently stop dividing. Research looks at the same crucial protein's role in either event. [MORE »](#)



Faculty Council Elects New Leadership

A record turnout has led to the election of new Faculty Council leadership. See how new Vice Chair Susan Block views her role.

Connect



Published by Harvard Medical School, Office of Communications and External Relations
[About Us](#) | [Contact Us](#) | [Subscribe](#)

To unsubscribe, please [click here](#)