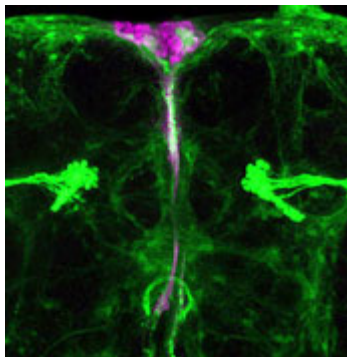




10.01.2012

DISCOVERY AND EDUCATION AT HARVARD MEDICAL SCHOOL

[HMS.HARVARD.EDU/NEWS](http://HMS.HARVARD.EDU/NEWS)



## Leptin Connection

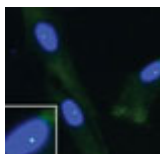
A fruit-fly hormone yields clues to the genetics of human obesity. [MORE »](#)



### Remarkable Collaboration

How serendipity and stubborn dedication drove the discovery of a new blood-cancer drug.

[MORE »](#)



### Two-for-One Approach

The detection of a molecular link between two fatal motor neuron diseases may lead to a common treatment.

[MORE »](#)

### Featured Events

**10.02.12** Imagining Illness: An Evening of Art, Literature and Music. TMEC Aud., 5:30 p.m.

**10.05.12** Medical Education Grand Rounds: ScholarLocker. TMEC 209, 7:30 a.m.

[Full Calendar](#)

[Awards & Recognitions](#)

[Dean's Corner](#)

[Harvard Medicine Magazine](#)

[Idea Lab](#)



### New Light on Aging

HMS researcher probes aging in repetitive and mobile genetic elements.

### Connect



Published by Harvard Medical School, Office of Communications and External Relations  
[About Us](#) | [Contact Us](#) | [Subscribe](#)

To unsubscribe, please click [here](#)